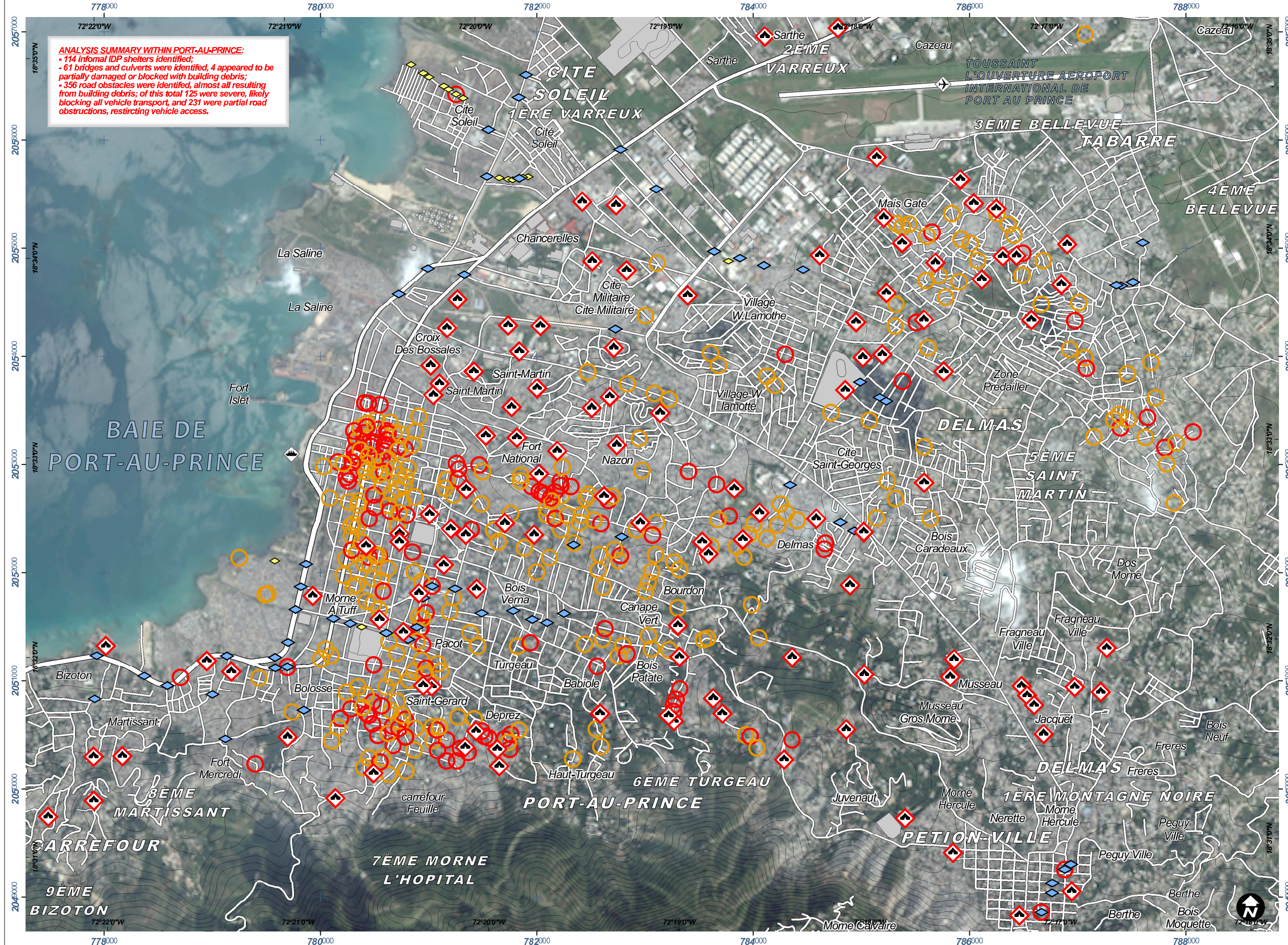


SATELLITE-IDENTIFIED IDP CONCENTRATIONS, ROAD & BRIDGE OBSTACLES IN CENTRAL PORT-AU-PRINCE, HAITI

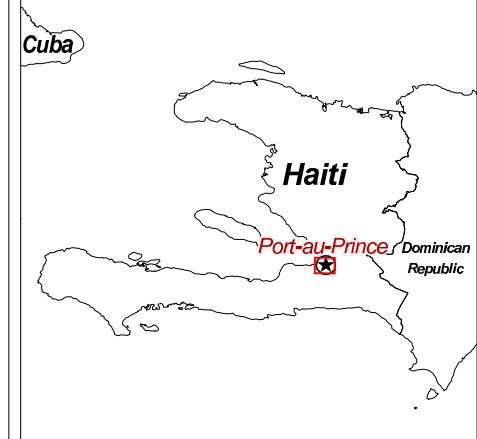
Operational Analysis with GeoEYE-1 Data Acquired 12 January 2010 and QuickBird data acquired 4 March 2008

This work was done in support of recorded on 12 January 2010. The international humanitarian This is a preliminary analysis & relief effort in Haiti following the has not yet been validated in the earthquake on 12 January 2010. field. Road and bridge damages Informal IDP sites, bridges and have likely been underestimated. road obstacles have been Please send ground feedback to identified in GeoEye-1 imagery UNITAR / UNOSAT.

Earthquake 7.0M
14 January 2010 (21:00:00 UTC)
Version 1.0
 Glide No: EQ-2010-000009-HTI



ANALYSIS SUMMARY WITHIN PORT-AU-PRINCE:
 - 114 informal IDP shelters identified;
 - 61 bridges and culverts were identified, 4 appeared to be partially damaged or blocked with building debris;
 - 356 road obstacles were identified, almost all resulting from building debris; of this total 125 were severe, likely blocking all vehicle transport, and 231 were partial road obstructions, restricting vehicle access.



Legend

- Likely Informal IDP Site
- Bridge & Road Obstacles Probable Operational Status
- Likely Closed by Debris
- Likely Restricted by Debris
- Airfield
- Port
- Bridge
- Culvert
- Foot Bridge
- Primary Road
- Secondary / Urban Road
- Unpaved / Minor rd
- Railroad

Map Scale for A3: 1:35,000
 UTM grid coordinates given in 1/2km intervals
 Elevation contour lines in 20 meter intervals
 Background satellite imagery WV2 9Jan2010 (DigitalGlobe)

Satellite Data (1)..... GeoEye-1
 Imagery Dates 12 January 2010
 Resolution 50cm
 Copyright GeoEye 2009
 Satellite Data (2) QuickBird-2
 Imagery Date 4 March 2008
 Copyright DigitalGlobe
 Source Google Earth
 Road Data Open Street Map
 Place Names Google Map Maker
 Other Data MINUSTAH, USGS, NGA
 Elevation Data ASTER GDEM
 Source METI & NASA 2009
 Analysis UNITAR / UNOSAT
 Map Production UNITAR / UNOSAT
 Projection UTM Zone 18 North
 Datum WGS-84 (EGM-96)

Map Data © 2009 Google - Improve with Google Map Maker
 The depiction and use of boundaries, geographic names and related data shown here are not warranted to be error-free nor do they imply official endorsement or acceptance by the United Nations. UNOSAT is a program of the United Nations Institute for Training and Research (UNITAR), providing satellite imagery and related geographic information, research and analysis to UN humanitarian & development agencies & their implementing partners.

UNITAR
 United Nations Institute for Training and Research

UNOSAT
 Contact Information: unosat@unitar.org
 24/7 Hotline: +41 76 487 4998
www.unosat.org